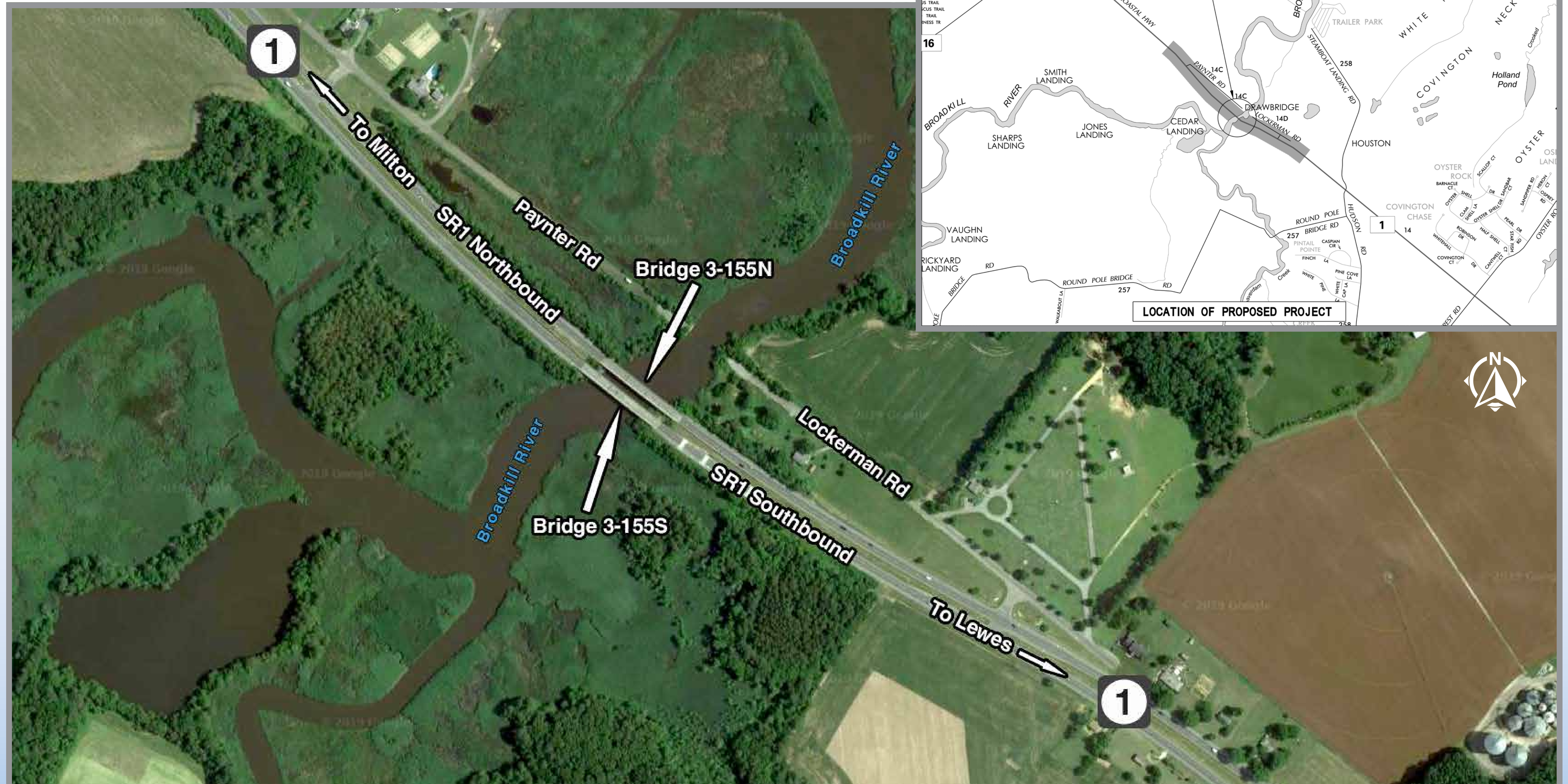


SR 1 over Broadkill River



Delaware Department
of Transportation

PROJECT AREA



EXAMPLES OF SIMILAR CONSTRUCTION TECHNIQUES

Pennsylvania DOT



SR 0030 over Bessemer Avenue
Allegheny County, PA



SR 288 over Wampum Run
Lawrence County, PA

TYPICAL BRIDGE DEFECTS



Concrete deterioration along bridge pier



Deterioration of steel bridge bearings and supporting concrete



Deterioration of southbound bridge deck



Typical deterioration of the beam ends and bearings

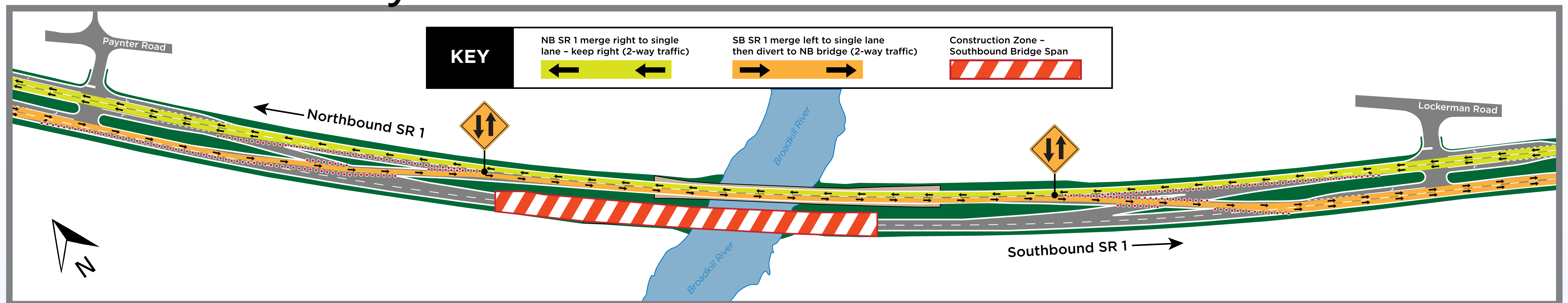
SR 1 over Broadkill River



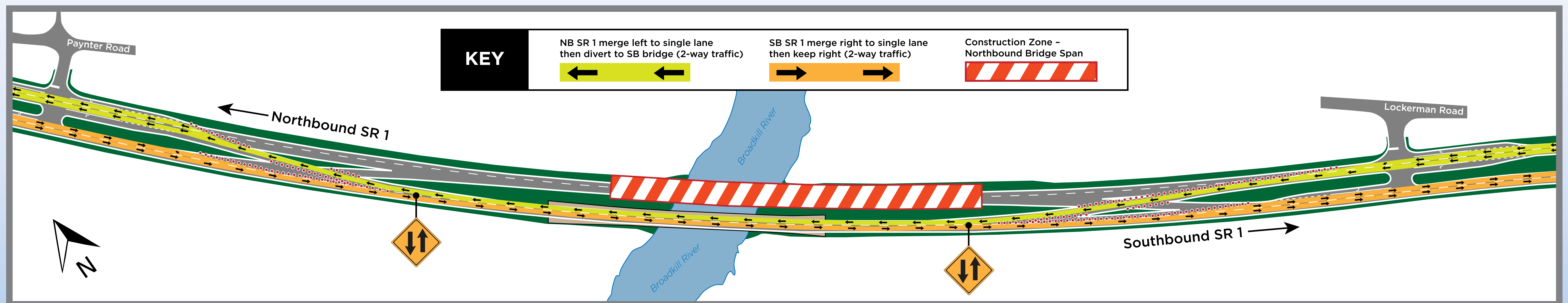
Delaware Department
of Transportation

BRIDGE MAINTENANCE OF TRAFFIC

Phase 1: January 2021 - March 2021



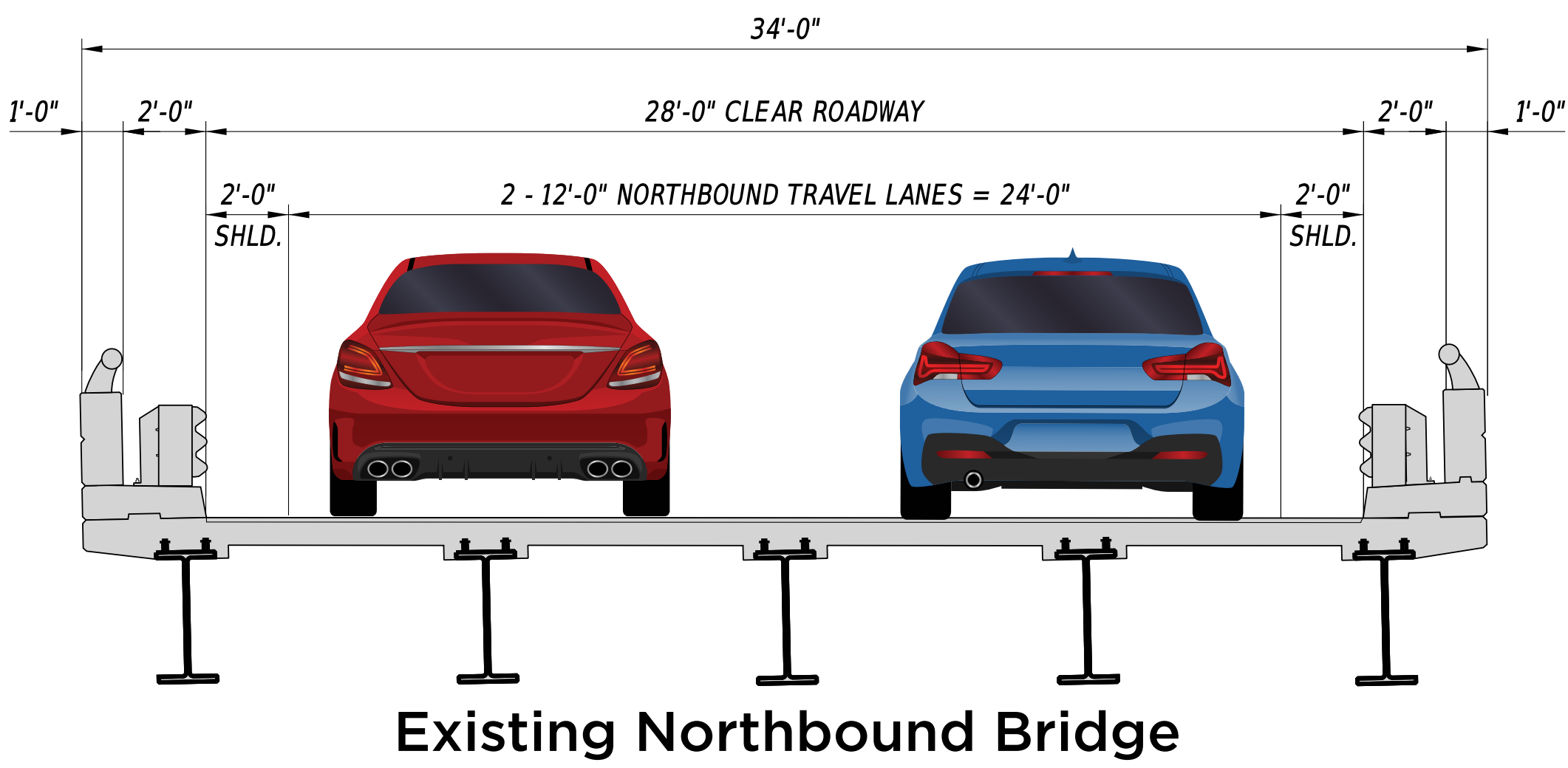
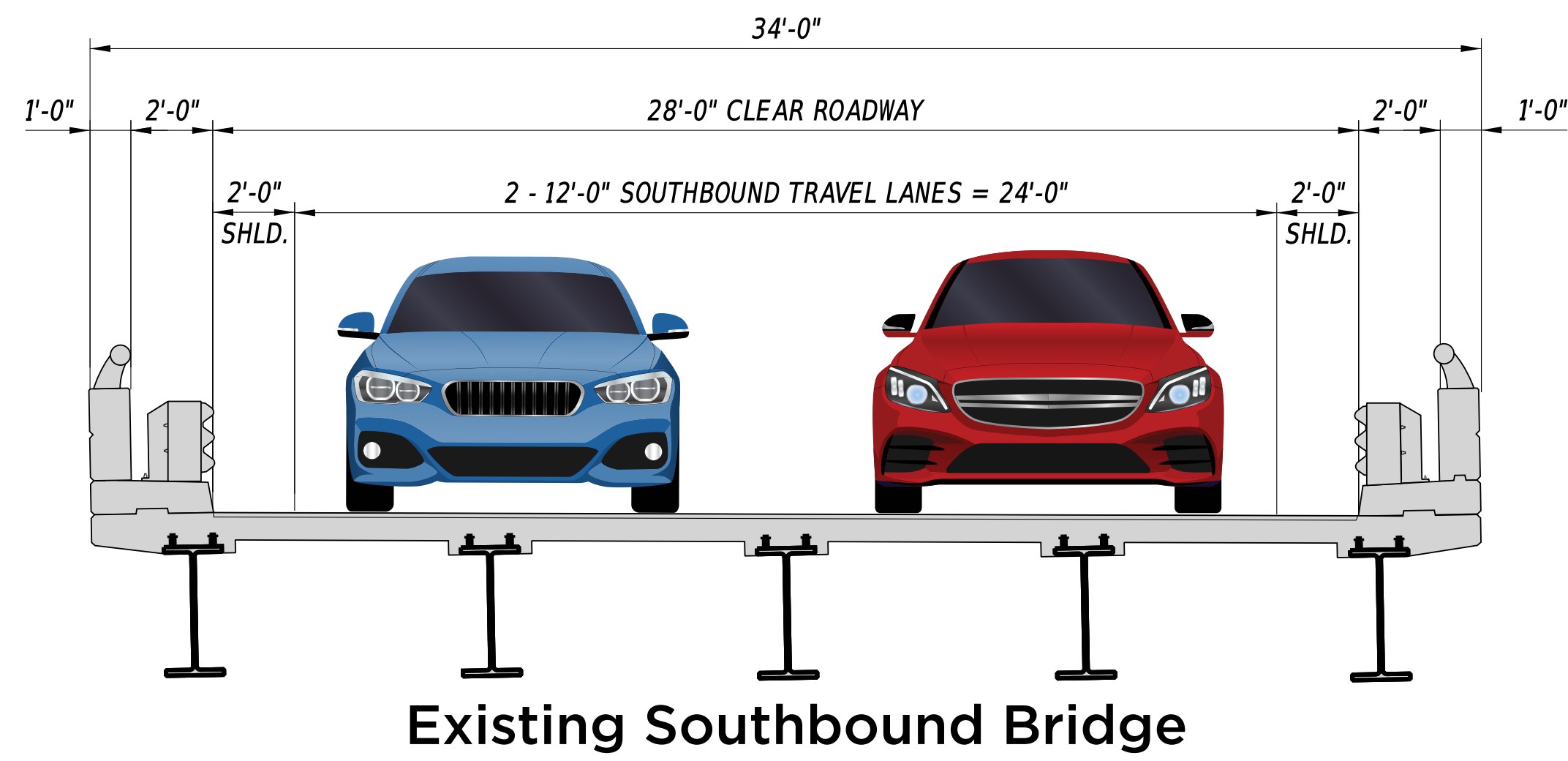
Phase 2: October 2021 - December 2021



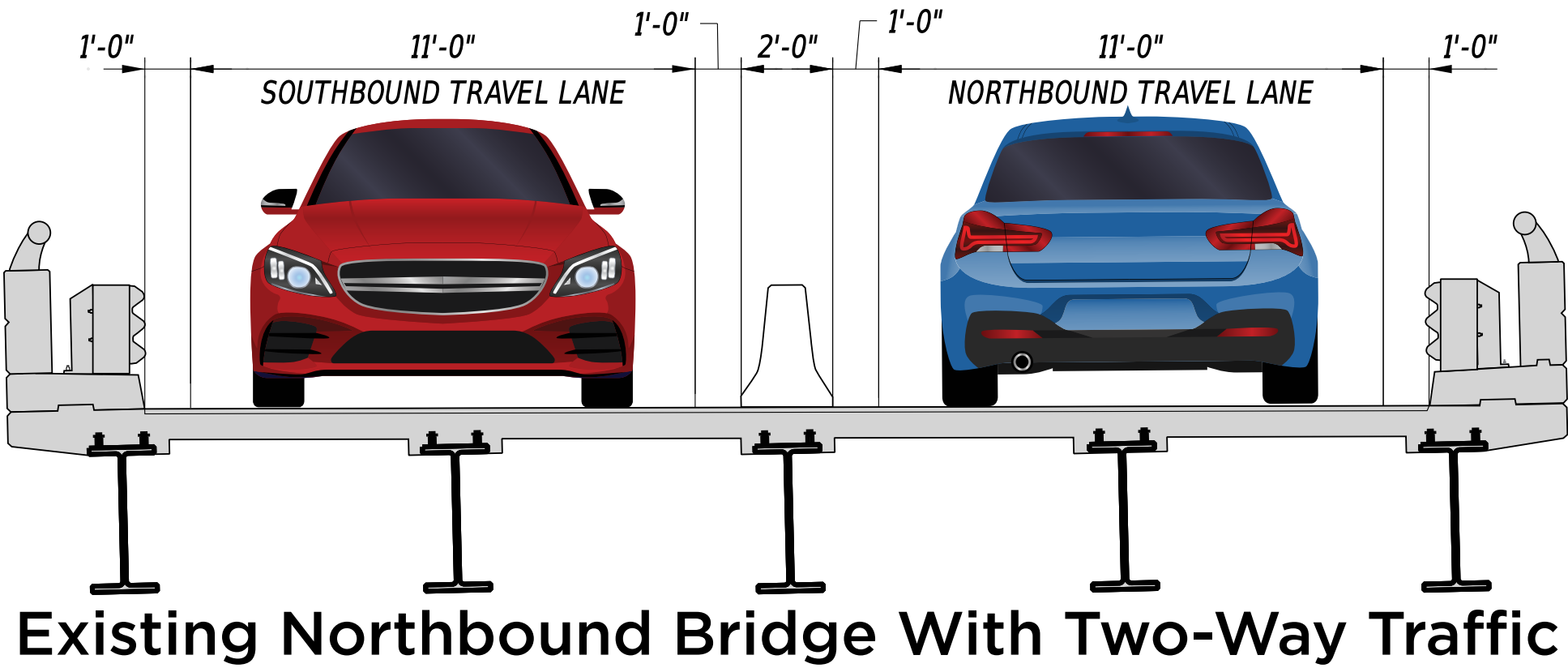
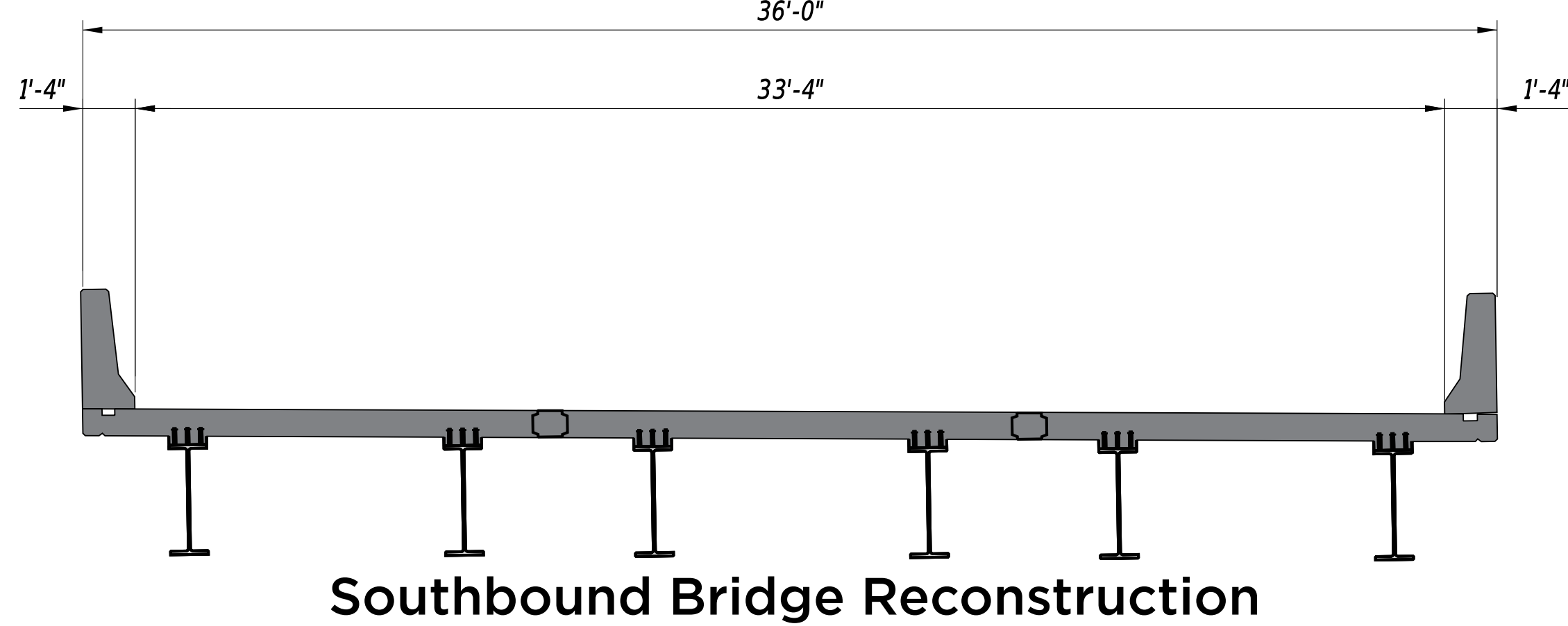
Note: Additional bridge repair work that does not require roadway closures shown above is anticipated beyond the dates shown.

CONSTRUCTION PHASING

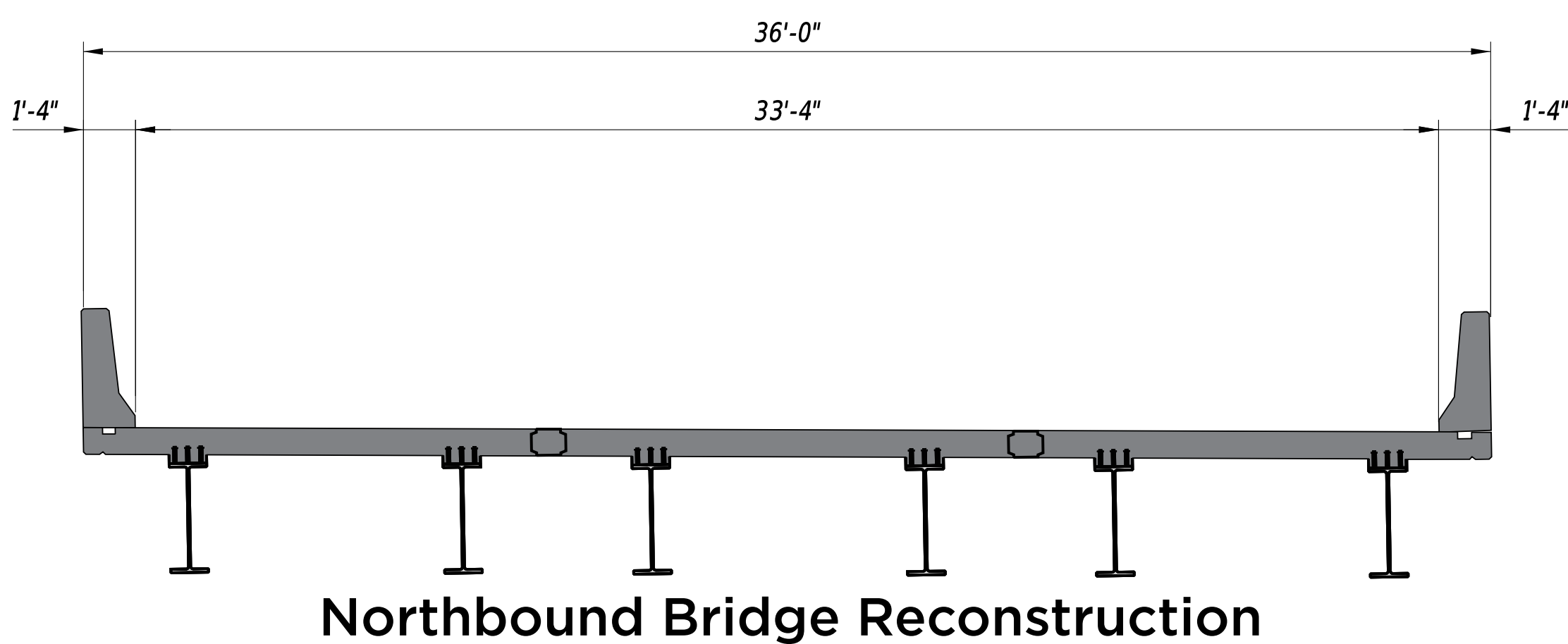
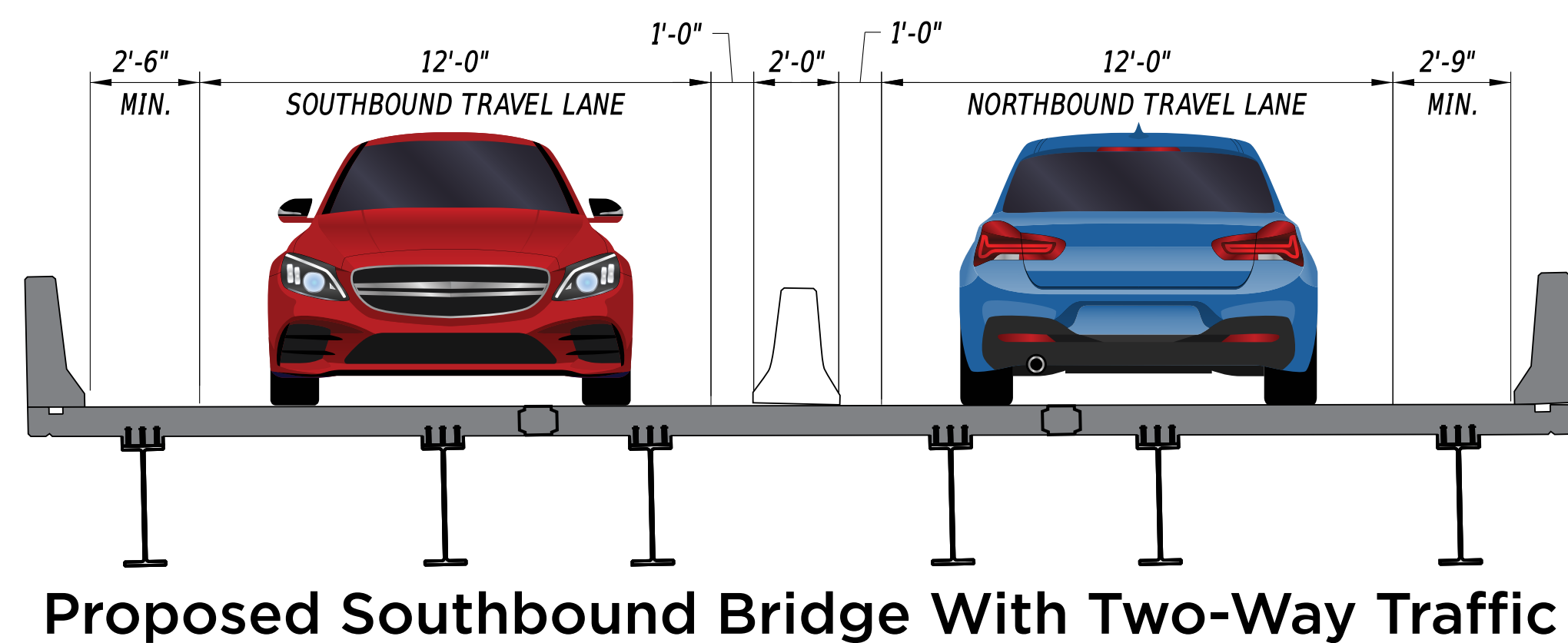
EXISTING TYPICAL SECTIONS LOOKING NORTH



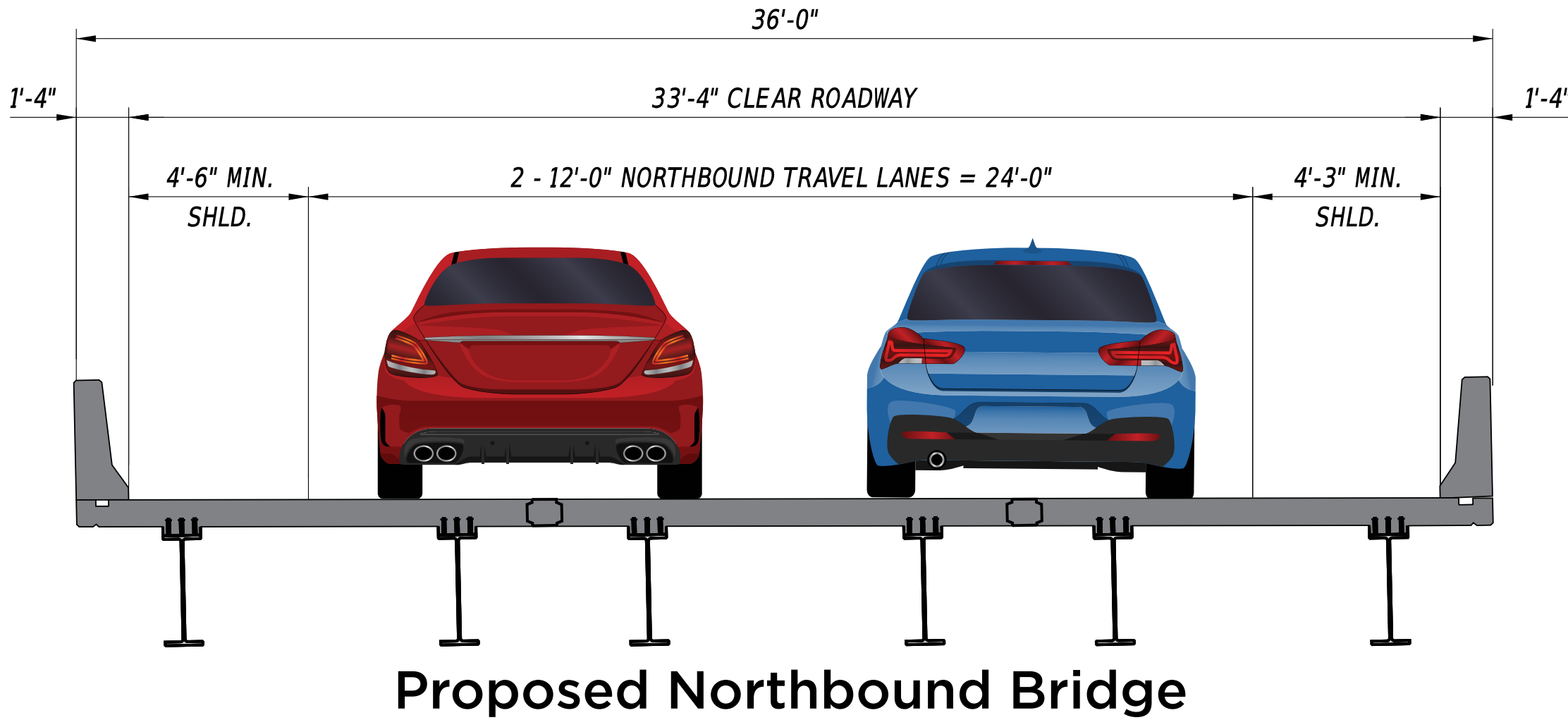
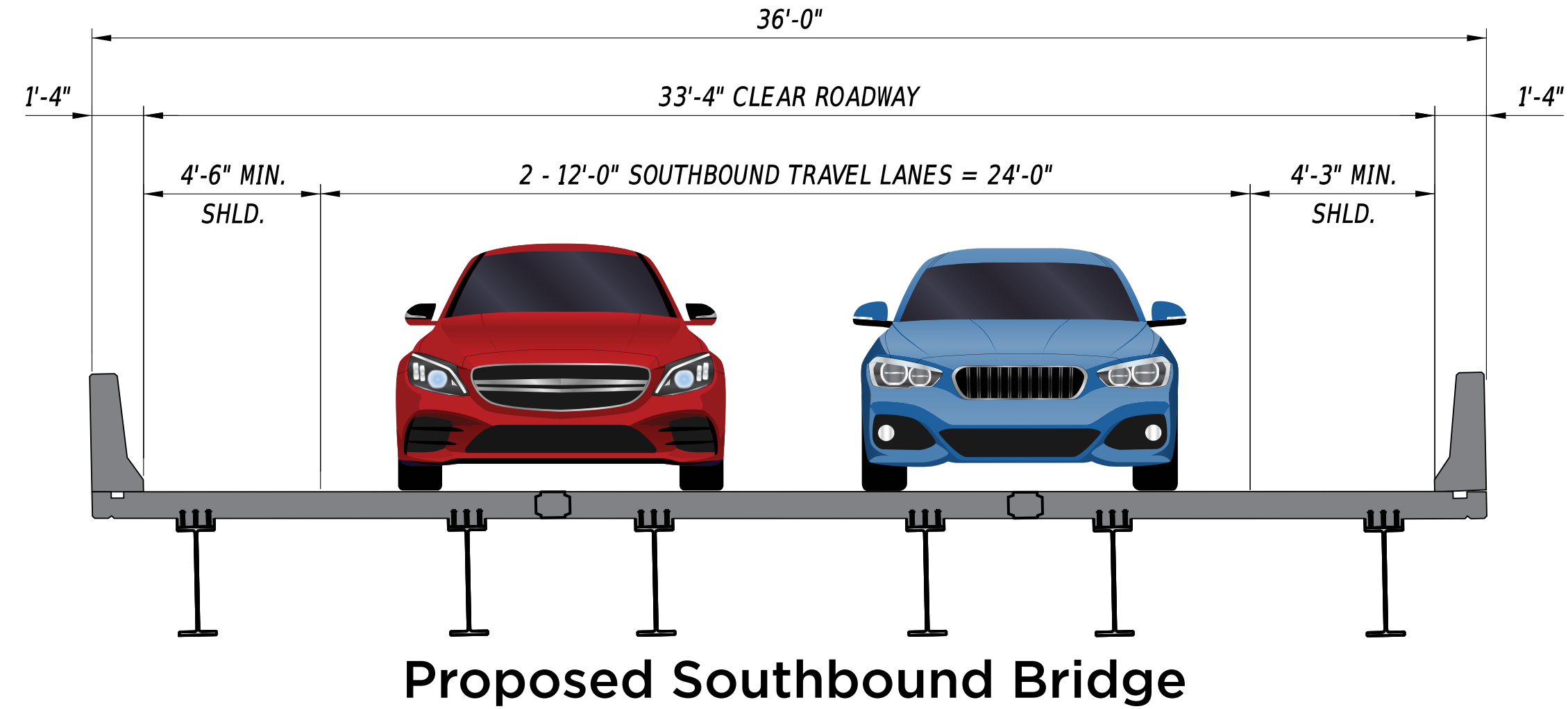
PHASE 1 - SOUTHBOUND BRIDGE RECONSTRUCTION LOOKING NORTH



PHASE 2 - NORTHBOUND BRIDGE RECONSTRUCTION LOOKING NORTH



PROPOSED TYPICAL SECTIONS LOOKING NORTH



LEGEND  Bridge Reconstruction  Existing  Temporary Concrete Traffic Barrier