

Premier Homes of the Delaware Beach Resorts

December 2020



**BERKSHIRE
HATHAWAY**
HomeServices
Gallo Realty

Real Estate's **FOREVER** Brand™





**152 BOBBYS BRANCH ROAD
VILLAGES AT MILLWOOD**

WELL-MAINTAINED HOME IS THE "GEM OF THE NEIGHBORHOOD" This 3BR, 2.5BA home features thoughtful floorplan, storage, 2-car garage. Nicely landscaped perimeter lot, with paver patio. Community pool, clubhouse, exercise room.

\$262,500



**18948 GOLDFINCH COVE
SUMMERCREST**

SEIZE THIS STUNNER! This 4BR, 2.5BA home features an open floorplan, stylish kitchen with stainless appliances, inviting LR with gas FP and sunroom. Convenient first-floor owner suite and three additional bedrooms on the second floor. Plenty of storage in the full, unfinished basement.

\$425,000



**510A REHOBOTH AVENUE
REHOBOTH BEACH**

GORGEOUS HOME DOWNTOWN! Adjacent to canal and above and behind EGG Restaurant, this 4BR, 3BA features gourmet kitchen, FR, two LR, two FP, two balconies, and screened porch with outdoor FP, stone patio, Geothermal HVAC. Walk to shops, dining, and the beach!

\$899,000



**9 BEACON DRIVE
BREAKWATER ESTATES**

LOCATION AND COMFORT Open floor-plan features vinyl plank flooring and porcelain tile throughout, granite counters, stainless appliances, sunroom, private owner suite, 2 additional BRs with walk-in closets. Tankless hot-water heater, encapsulated crawlspace, and more!

\$349,750



**29883 VINCENT AVENUE
CARSYLJAN ACRES**

LIKE NEW, SO MUCH OPPORTUNITY Enjoy granite, new carpet with upgraded padding, new fixtures and appliances, new luxe vinyl plank flooring, which are all included with this spacious 3BR, 2BA home on a spacious .46-acre lot. No HOA and sold in-fee, so you own the land!

\$249,000



**26137 TUSCANY DRIVE
KINGSTON RIDGE**

STYLISH AND FRESH This 4-plus BR home features: 9'-plus ceilings; gourmet kitchen with stainless appliances; luxury baths; light-filled open floorplan with DR, great room, and sunroom; relaxing screened porch; three first-floor BRs and an upstairs bonus room.

\$530,000



**9097 SHEPHERDS VIEW LANE
BRIDGEVILLE**

GORGEOUS FARMHOUSE, OVER 13 ACRES This 5,500SF custom-built home features peaceful country living with modern conveniences including LR/DR with a custom-built wall unit; family room; stone FP; gourmet kitchen; bonus room; 2-car attached garage, owner suite and more.

\$850,000



**17198 EXTON STREET
VILLAGES OF FIVE POINTS**

WELCOME TO THIS UNIQUE, SPECIAL HOME featuring 4BR, 3.5BA, and many upgrades and updates. Beautifully finished basement with large rec room, BA, gym, office space. Amenity-rich community: clubhouse, pool, tennis, trail, dining, retail, grocer.

\$689,000



**305 CHESTNUT STREET
MILTON**

CLASSIC CHARM IN HISTORIC DOWNTOWN The classic architectural aesthetic of random-width hardwood flooring, dual staircases, brick cellar foundation, and artistic trimwork transports you back in time. Features 3BRs, spacious main level with 2 LRs, large kitchen and DR.

\$399,900



**446 DELAWARE AVENUE
MILL LANDING**

WATERFRONT AND WATER ACCESS Unique home on Betts Pond offers an energy-efficient private oasis with lush landscaping, water views, and magnificent sunsets! Spacious rancher offers 2 levels of living with sunroom, patio, partially finished walk-out basement, and huge deck.

\$399,900



**16268 RED FOX RUN
RED FOX RUN**

NEW CONSTRUCTION AWAITS YOUR TOUCHES Enjoy many upgrades in this 3BR, 3.5BA coastal-style home with open floorplan, FP, first-floor owner suite, and more. Roomy lot in private, well-located community.

\$549,900



**9 CHARLES MASON WAY
LEWES BEACH**

BEST OF THE BEACH Enjoy solid construction and room for relaxing with 4-plus BR, 2.5BA, including an owner suite on the second level with private screened porch access. Enjoy a modern open kitchen, dining, living design on the top level, along with an office/5th BR.

\$1,549,000



**34114 & 34136 SEWELL LANE
LEWES**

RARE OPPORTUNITY The 2BR, office, 2.5BA home features an open floorplan, gas FP, functional kitchen with breakfast bar, owner suite with a walk-in closet, rear deck, and more. The second home features a first-floor bedroom, eat-in kitchen, second-floor loft, private enclosed porch.

\$975,000



**19032 MUSTANG COURT
TRAILS OF BEAVER CREEK**

LONG LIST OF FEATURES This home delivers inviting spaces with 4 accommodating BRs; welcoming great room with FP open to the gourmet kitchen that flows effortlessly to the sunroom; formal DR and bonus sitting room; even an unfinished basement with plenty of storage.

\$489,900



**707 E. MARKET STREET
GEORGETOWN**

GEORGETOWN CHARM This charming colonial will transport you back in time with its classic architecture situated on a deep, 200' lot with spacious backyard with room for pool, or extra parking if converted to a professional office. Located within minutes to the Circle, County Court Houses.

\$269,900



**1 PATRIOTS WAY
KINGS CREEK COUNTRY CLUB**

ELEGANCE, PERSONAL RESORT STYLE! Gracious features include soaring ceilings, columns, moulding, and extensive custom finishes. Host holidays to remember in the stunning, modern kitchen with stainless appliances, double ovens, and professional gas range.

\$1,950,000



**108 MCFEE STREET
LEWES**

CLASSIC LEWES, HISTORIC DISTRICT Traditional architecture delivers 4BR upstairs, first-floor bedroom/office, sitting room with gas FP, eat-in kitchen/living area. Wraparound porch and back deck. Oversized lot. Full unfinished basement adds even more.

\$989,900



**486 E. MARKET STREET
LEWES BEACH**

BRAND NEW This 5BR, 4.5BA home (including 3 bedrooms with private baths and 2 additional guest bedrooms) showcases an open kitchen and great room design, plus decks and porches to enjoy the soothing canal and marshland views and bay breezes.

\$1,450,000



**34192 SPRING BROOK AVENUE
VILLAGES AT RED MILL POND**

BEAUTIFUL, METICULOUSLY MAINTAINED HOME Open, bright, 3BR, 2BA home features landscaped patio. Community amenities include clubhouse, pool, access to bike trail.

\$385,000



**320 UNION STREET
MILTON**

HISTORIC IN-TOWN JEWEL Amazing location allows you to live and work with many possibilities for your at-home business, or make it your personal residence. Enjoy Victorian ornamental details throughout, including bay windows, hardwood floors, and stained glass window.

\$350,000



ENJOY THE EASE OF CONDOMINIUM LIVING!



1301 COASTAL HIGHWAY, #427 LIGHTHOUSE COVE

SPECTACULAR BAY AND OCEAN VIEWS. Furnished 4BR, 3BA. Great investment/rental income, in excess of \$70K in 2020. **\$1,099,900**



29 MARYLAND AVENUE, #101 PINE AND BRINE

RENOVATED BEACH RETREAT. Furnished 2BR, 2BA oceanblock condo in the heart of Rehoboth Beach. Great rental potential. **\$609,900**



37514 PETTINARO DRIVE, #9501 BETHANY BAY

SO CLOSE TO THE BEACH 2BR, 2BA end-unit with screened deck. Community golf, pool, tennis boat launch and more. **\$275,000**



33580 WINDSWEEP DRIVE, # 4101 THE PENINSULA

PRIDE IN OWNERSHIP shines in this furnished 3BR, 2BA. Features include open floorplan, FP, upgrades and more. Community amenities. **\$309,900**



100 ANCHOR WAY, UNIT 5 ANCHOR WAY

BAY-BLOCK CONDO WITH SOUTHERN EXPOSURE. Furnished 4BR, 2.5BA home offers upgraded kitchen, FP. Proven rental history. **\$669,000**



1406 COASTAL HIGHWAY, #31 THE DELANO

OCEANBLOCK IN DEWEY BEACH! Furnished 3BR, 2BA two-story condo is ready as an investment or personal use. Numerous upgrades. **\$489,900**

Building Lots

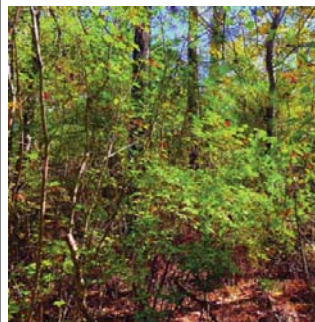
Ashburn



Exclusive enclave near Lewes. Beautiful lot with no builder tie-in. Measures approximately .79 acre. No utilities, no restrictions. Tranquil, private setting less than a mile to Lewes attractions.

\$325,000

Bethany Beach



Bring your ideas to this well-located homesite so close to downtown attractions. Parcel measures approximately 50 x 90, providing privacy and flexibility. Make your beach dreams come true.

\$399,000

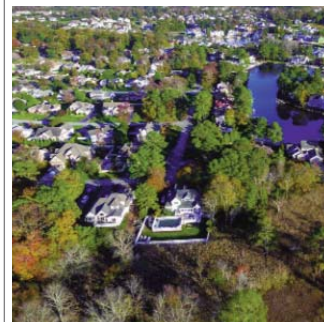
Broadkill Beach



Rare waterfront parcel provides the perfect opportunity to design and build your dream beach home surrounded by Nature.

\$399,000

RBYCC



Measuring just over 1/3-acre, this rare parcel is located in desirable community. No builder tie-in. Canal waterway located just across the street. Bring your ideas and begin your beach lifestyle.

\$249,000

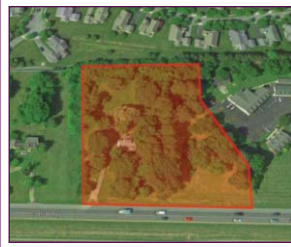
GEORGETOWN



Commercial frontage on Route 113, last and largest City of Georgetown parcels left. City utilities, commercial and mixed use. Bring your ideas!

\$2,399,000

LEWES



Prime potential delivers approximately 2.6 acres of county land adjacent to the Red Mill Inn, southbound on Route 1. Land is zoned C-1 and has road frontage on Route 1. **\$1,650,000**

MILFORD



Investor potential with this stately building situated downtown. Bank vault. Safe deposit boxes still intact. Parking lot. Being sold in as-is condition.

\$499,000

MILFORD



4.99-acre parcel in opportunity zone, with city utilities. New commercial corridor offers the chance to get in on the ground floor of a newly created interchange. **\$2,420,150**

MILTON



Rare, income-producing investment opportunity downtown. Twelve rentable retail/office units. Located on the Broadkill River, with city parking lot across the street. **\$695,000**

REHOBOTH BEACH



Turn-key operation! Restaurant includes all that you need to step into the beach market. Full alcohol license. Owner has been operating since 2012 in this location. **\$279,000**

SOUTH REHOBOTH



Popular restaurant with traditional furnishings. Second-floor open dining area offers glimpses of the ocean. Business for sale or lease. Building owners are licensed DE REALTORS®. **\$395,000**

SOUTH REHOBOTH



Income-producing property just over 2 blocks to the Boardwalk. Fully leased commercial property. Two retail spaces on first floor; large office located on second floor. **\$2,500,000**

Vacation Rental Guide 2020

Delaware Beach Resorts

GoToGallo.com



BERKSHIRE HATHAWAY
HomeServices
Gallo Realty

BETHANY BEACH
33292 Coastal Highway
302-537-2616
REHOBOTH BEACH
37230 Rehoboth Ave. Ext.
302-227-6554

LEWES
16712 Kings Highway
302-645-6697

See! Estate's FOREVER Brand

Thinking of moving here?

Why not try us out for your next vacation?

Our Rental Division manages nearly 500 vacation properties throughout coastal Delaware.

Contact one of our offices below, or visit our website at GoToGallo.com.

LEWES

16712 Kings Highway

302-645-6697 rentals

REHOBOTH BEACH

37230 Rehoboth Ave. Ext.

302-227-6554 rentals

BETHANY BEACH

33292 Coastal Highway

302-537-2616

The holidays in 2020 look “different”
from our usual celebrations.
Adapting to these “different” ways
to gather safely is challenging to us all.

But no matter how you decide to celebrate,
we hope that you have an opportunity
to relax, reflect, and recharge.

Sunny days at the beach are in our future!



Cover Property *423 W. Third Street, Lewes*

IDYLIC LEWES LOCATION AND STYLE

Enjoy Coastal Delaware living in this gorgeous, spacious architectural showstopper! Well-located on a favorite in-town street, this modern masterpiece blends seamlessly into Historic Lewes with amazing curb appeal. Enjoy craftsmanship, energy efficiency, and a long list of upgrades including custom lighting, beautiful hardwood floors, expansive owner suite, adjoining studio/sitting room with back staircase, contemporary open floorplan and chef's kitchen, attached 2-car garage, and the space and flexibility of 4BR and 3.5BA. Fenced for privacy, the backyard is your personal retreat! The best of the beach is so close, with the luxury and comfort of recent construction. \$1,199,000



Information: It Gives You An Advantage

- See how buyers are searching for homes on the Internet
- Register to search for "sold" properties from our Multiple Listing Service
- Receive customized reports showing real estate activity in your neighborhood

Call us today to get your "Inside Access" or visit us online at GoToGallo.com/IA

LEWES
16712 Kings Highway
302-645-6661

REHOBOTH BEACH
37230 Rehoboth Ave. Ext.
302-227-6101

BETHANY BEACH
33292 Coastal Highway
302-537-2616

GoToGallo.com

