

Premier Homes of the Delaware Beach Resorts

March 2021



**BERKSHIRE
HATHAWAY**
HomeServices
Gallo Realty

Real Estate's **FOREVER** BrandSM



Cover Property

48 Surf Avenue, North Rehoboth

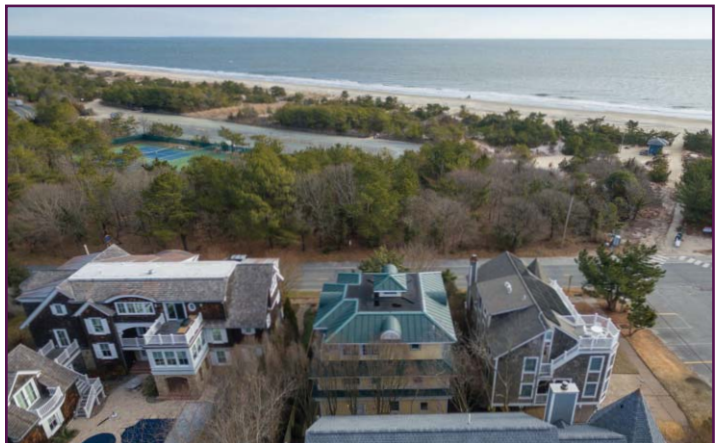
ACT QUICKLY

This is the only single family home in Rehoboth that is steps from the sand and tennis courts and with direct ocean views currently on the market.

This stunning fully furnished home offers 5BR, 6.5BA and every bedroom has a private en-suite bath. The entry level of this home provides a large family room with kitchenette, 3BR with private baths, laundry and a large beautifully tiled bathroom with a separate entrance to rinse off those sandy feet. Using the stairs or the elevator, you access the 2nd level which offers an additional 2 bedrooms all with a private bath, another laundry room, a play room, and storage. The top floor also accessible by stairs or elevator brings you to the great room with a chefs kitchen, dining area, large family room, a powder room, and a wall of floor to ceiling glass doors that open to a wrap-around deck and stunning direct ocean views.

This home has been completely re-painted and comes fully and beautifully furnished. This home is "not" in a flood plain, has a metal roof, no maintenance landscaping, tankless hot water, and 2 zone heating/air.

There is no better option at the beach! \$3,999,000



Lewes/302-645-6661 • Rehoboth Beach/302-227-6101 • Bethany Beach/302-537-2616



102-2 CEDAR STREET LEWES BEACH

WALK TO THE BEACH Spacious 4BR delivers more than meets the eye, including an inviting floor plan with hardwood flooring and a renovated kitchen. The third level was updated in 2017 to include 2BR, 2BA and kitchen. Perfect for beach escape or rental investment.

\$893,678



144 ELIZABETH WAY SANDPIPER PINES

A LIFETIME OF MEMORIES AWAIT 4BR, 2.5BA, numerous upgrades, open floor plan, 2-story stonework FP, gourmet kitchen, 2-car garage, covered porch. Walking distance with access to the private beach, ocean side at Sandpiper Village.

\$1,080,000



22221 RAVEN CIRCLE KINGS CROSSING

WELCOME HOME! 3BR, 2BA, move-in ready modular is waiting for your personal touch. Open-concept floor plan and owners suite.

\$185,000



1 PATRIOTS WAY KINGS CREEK COUNTRY CLUB

ELEGANCE, PERSONAL RESORT STYLE! Gracious features include soaring ceilings, columns, moulding, and extensive custom finishes. Host holidays to remember in the stunning, modern kitchen with stainless appliances, double ovens, and professional gas range.

\$1,550,000



34114 & 34136 SEWELL LANE LEWES

RARE OPPORTUNITY The 2BR, office, 2.5BA home features an open floorplan, gas FP, functional kitchen with breakfast bar, owner suite with a walk-in closet, rear deck, and more. The second home features a first-floor bedroom, eat-in kitchen, second-floor loft, private enclosed porch.

\$945,000



16277 RED FOX RUN RED FOX RUN

POND VIEW SETTING This almost brand new 3BR, 3BA home features a gourmet kitchen, convenient first floor owners suite with an owners tiled bath. Custom home community near new hospital, short drive to beaches.

\$499,900



32966 BLACK DUCK COURT LONG NECK SHORES

ONE OF A KIND BEAUTY ON A PICTURESQUE POND! 6BR, 3.5BA home features open floor plan, media/bonus room, first floor owners suite, gourmet kitchen, great room and more. Community amenities. Owner is licensed Realtor®.

\$519,900



528 E. CAPE SHORES DRIVE CAPE SHORES

BRIGHT BEACH GETAWAY Vacation and year-round living is a breeze in this home. Enjoy 4BR and 2BA and an open floor plan that offers plenty of room for relaxing and taking in scenic views that come with the awesome location, steps to the peaceful bay beach.

\$1,400,000



201 SUNRISE DRIVE OAK GROVE

SITUATED ON A LARGE CORNER LOT This 4BR, 2.5BA home features geothermal heating & air conditioning, gas FP and sunroom. Bedroom, bath & office on first floor. Two-car garage, irrigation, shed and more.

\$425,000



**320 UNION STREET
MILTON**

HISTORIC IN-TOWN JEWEL Amazing location allows you to live and work with many possibilities for your at-home business, or make it your personal residence. Enjoy Victorian ornamental details throughout, including bay windows, hardwood floors, and stained glass window.

\$350,000



**9 MILTON AVENUE
LEWES BEACH**

ENJOY AND ENVISION Sitting just two blocks to the Delaware Bay and Lewes Beach, this location is a fantastic investment! Home offers 3 spacious bedrooms, 2 full baths, open floor plan, and more. This sought-after spot is a go-to second home, weekly summer rental, or future retreat.

\$1,129,000



**116 NEW ROAD
LEWES**

LIVE AND PLAY in the town of Lewes with its rich nautical history. This five bedroom house has enough room for everyone! Three bedrooms including an owners suite on first floor with two full baths and two huge bedrooms and a full bath on second floor. Close to canal, town and beach!

\$649,900



**11253 SIGNATURE BOULEVARD
BAYSIDE**

IMPRESSIVE BY DESIGN Entertainer's paradise with gourmet kitchen, private first-floor owner's suite, 3 additional first-floor BRs, and a finished second story bonus room with attached unfinished storage room - and more! Amazing community amenities.

\$899,900



**30784 ELM DRIVE
EDGEWATER ESTATES**

WATERFRONT Enjoy serene water views of Red Mill Pond from this gorgeous, spacious home including: open floor plan, granite counters, stainless steel appliances, bright sunroom, first-floor owner's suite with spa-like bath and heated floors, rear deck and pond access.

\$750,000



**21848 AMETHYST LANE
SANDSTONE**

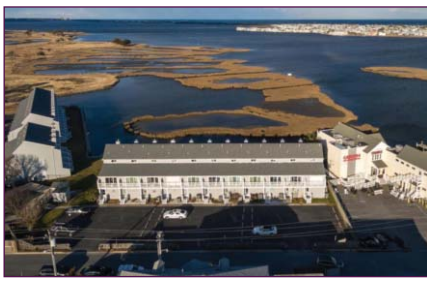
MODEL PERFECT, TON OF UPGRADES Meticulously cared-for "George" floorplan from Insight Homes is a 3BR, 2BA, 1-story stunner with hardwood flooring throughout main living areas, gas FP, gourmet kitchen, large primary suite and more. Save with solar panels, too!

\$319,900



Lewes/302-645-6661 • Rehoboth Beach/302-227-6101 • Bethany Beach/302-537-2616

ENJOY THE EASE OF CONDOMINIUM LIVING!



38927 MADISON AVENUE, #24 FENWICK LANDING

BOAT LOVER'S BAYFRONT TOWN-HOME Well maintained 3BR, 2.5 BA. Recently updated. Deeded boat slip. Owner is licensed Realtor® **\$575,000**



29 MARYLAND AVENUE, #101 PINE AND BRINE

RENOVATED BEACH RETREAT
Furnished 2BR, 2BA oceanblock condo
in the heart of Rehoboth Beach. Great
rental potential. **\$609,900**



24238 ZINFANDEL LANE, #106 VINEYARDS AT NASSAU VALLEY

UNDER CONSTRUCTION Incredible
opportunity to buy in one of Lewes's
newest and upcoming communities.
Est completion mid 2021. **\$238,326**



31967 TOPSAIL COURT, #25 SALT POND

RARE OPPORTUNITY 3BR, 2.5BA,
well-maintained, view of 15th hole,
owners suite, great storage areas.
Being sold furnished. **\$382,900**



18884 BENT ANCHOR CT #3502B WOODS COVE

LOCATION AND CONVENIENCE
First-floor, 2BR, 2BA, spacious floor
plan, hardwood floors through main
living area, owners' suite. **\$319,900**

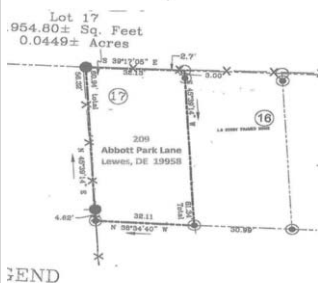


32409 BACK NINE WAY, #3754 BAYWOOD

LARGE END-UNIT 3BR, 3.5BA, own-
ers suite, gourmet kitchen, full, unfin-
ished basement, over-sized two-car
garage, golf cart and more. **\$289,900**

Building Lots

Abbott Park



Building lot. in this small 20 lot
community. Perfect for seasonal or
year-round living at an affordable
price! Cooperative Ownership.
Close to Downtown Lewes shops,
restaurants and more.

\$175,000

Broadkill Beach



Rare Waterfront lot. Here is the
opportunity to design and build
your dream home overlooking the
Delaware Bay with its amazing
sunrises.

\$399,000

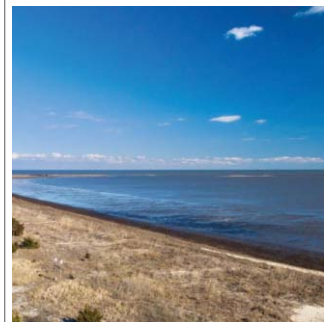
Milford



94-plus acres of cleared land locat-
ed on east side of Route 1, just min-
utes from Slaughter Beach. Great
site for building homes in rapidly
growing area.

\$3,900,000

Slaughter Beach



Rare opportunity to build your cus-
tom home. Your privacy will be
enhanced on this quiet street that
ends in a cul-de-sac.

\$349,000

MILFORD



These recorded lots sit one off of Route 1 in Commercial District, which includes Grotto Pizza and Royal Farms. Shovel-ready, recorded in the city, and provide utilities on site. **\$582,540**

LEWES



Prime potential delivers approximately 2.6 acres of county land adjacent to the Red Mill Inn, southbound on Route 1. Land is zoned C-1 and has road frontage on Route 1. **\$1,499,000**

MILFORD



Within city limits, 50 acres with central water and sewer zoned QOZ with other developer incentives offered. Level high ground with all utilities onsite. **3,490,000**

MILFORD



4.99-acre parcel in opportunity zone, with city utilities. New commercial corridor offers the chance to get in on the ground floor of a newly created interchange. **\$1,991,010**

MILTON



Rare, income-producing investment opportunity downtown. Twelve rentable retail/office units. Located on the Broadkill River, with city parking lot across the street. **\$695,000**

REHOBOTH BEACH



Turn-key operation! Restaurant includes all that you need to step into the beach market. Full alcohol license. Owner has been operating since 2012 in this location. **\$279,000**

MILFORD



2.99-acre parcel in an opportunity for business and investment developers. Parcel will be the hard corner off NE Front Street. Owner will pay for subdividing this lot. **\$1,193,010**

SOUTH REHOBOTH



Income-producing property just over 2 blocks to the Boardwalk. Fully leased commercial property. Two retail spaces on first floor; large office located on second floor. **\$2,500,000**

Looking for a new-construction home? Our agents would love to represent you.

There are many opportunities available. Our skilled and experienced agents will assist you in choosing the right community and home, negotiating terms, and representing you throughout the process.



If you are in the market to purchase a new home, call us today. We'd love to help!

Vacation Rental Guide 2021

Delaware Beach Resorts
GoToGallo.com



BERKSHIRE
HATHAWAY
HomeServices

Gallo Realty

LEWES
302-645-6697
REHOBOTH BEACH
302-227-6554
BETHANY BEACH
302-537-2616

Real Estate's FOREVER Brand™

Thinking of moving here?

*Why not try us out
for your next vacation?*

Our Rental Division manages
nearly 500 vacation properties
throughout coastal Delaware.

Contact one of our offices below,
or visit our website at
GoToGallo.com.

LEWES

16712 Kings Highway
302-645-6697 rentals

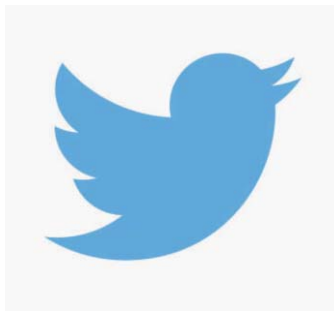
REHOBOTH BEACH

37230 Rehoboth Ave. Ext.
302-227-6554 rentals

BETHANY BEACH

33292 Coastal Highway
302-537-2616

Connect With Us On Social Media



@gotogallo • #bhhsgallorealty

Lewes/302-645-6661 • Rehoboth Beach/302-227-6101 • Bethany Beach/302-537-2616

**BERKSHIRE
HATHAWAY**
HomeServices

Gallo Realty

Spring is right around the corner...

Buyers are active now.

Listings Needed!!

Please call us to find out what your
home is worth in today's market.



Information: It Gives You An Advantage

- See how buyers are searching for homes on the Internet
- Register to search for "sold" properties from our Multiple Listing Service
- Receive customized reports showing real estate activity in your neighborhood

Call us today to get your "Inside Access" or visit us online at GoToGallo.com/IA

LEWES
16712 Kings Highway
302-645-6661

REHOBOTH BEACH
37230 Rehoboth Ave. Ext.
302-227-6101

BETHANY BEACH
33292 Coastal Highway
302-537-2616

GoToGallo.com



©2021 BHH Affiliates, LLC. An independently owned and operated franchisee of BHH Affiliates, LLC. Berkshire Hathaway HomeServices and the Berkshire Hathaway HomeServices symbol are registered service marks of HomeServices of America, Inc.® Equal Housing Opportunity.

